

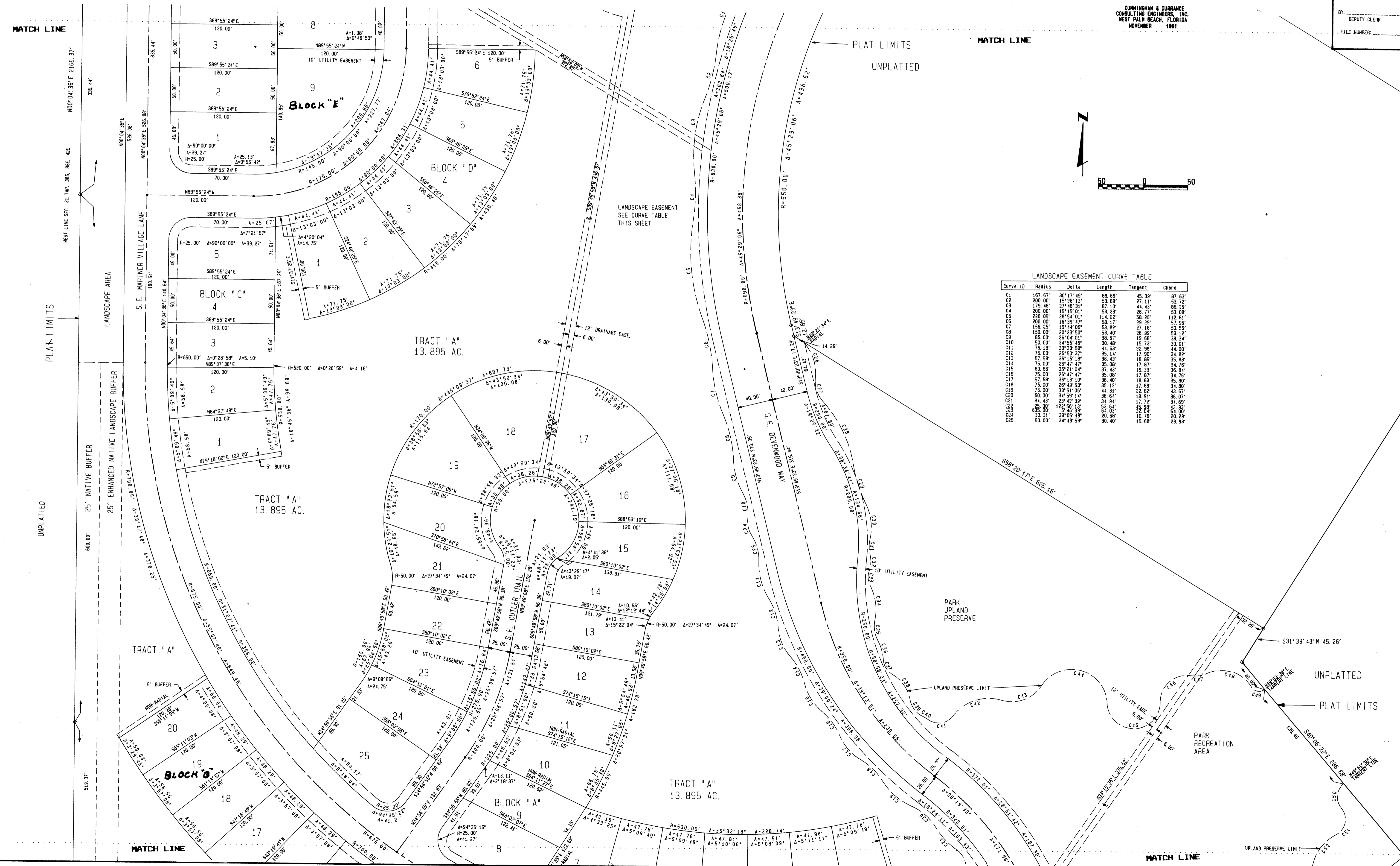
SHEET 4 OF 5  
PLAT I OF  
MARINER VILLAGE, P. U. D. R  
IN PART OF SEC. 30, TWP. 30S, RGE. 42E  
AND SEC. 6, TWP. 30S, RGE. 42E  
DADE COUNTY, FLORIDA

STATE OF FLORIDA  
COUNTY OF MARTIN

I, MARSHA STILLER, CLERK OF THE CIRCUIT COURT OF MARTIN COUNTY, FLORIDA, HEREBY CERTIFY THAT THIS PLAT WAS FILED FOR RECORD IN PLAT BOOK 12, PAGE 95, MARTIN COUNTY, FLORIDA PUBLIC RECORDS THIS \_\_\_\_\_ DAY OF \_\_\_\_\_ 1991. MARSHA STILLER, CLERK CIRCUIT COURT MARTIN COUNTY, FLORIDA

CUNNINGHAM & DURANCE  
CONSULTING ENGINEERS, INC.  
WEST PALM BEACH, FLORIDA  
NOVEMBER 1991

BY: \_\_\_\_\_  
DEPUTY CLERK  
FILE NUMBER: \_\_\_\_\_



LANDSCAPE EASEMENT CURVE TABLE

Curve ID	Radius	Delta	Length	Tangent	Chord
C1	167.67'	30°17'49"	88.66'	45.39'	87.63'
C2	200.00'	15°26'13"	53.89'	27.11'	53.72'
C3	178.45'	27°48'11"	87.10'	44.43'	86.25'
C4	200.00'	15°15'01"	53.23'	26.77'	53.08'
C5	226.05'	39°54'01"	114.02'	58.25'	112.81'
C6	200.00'	16°39'47"	58.17'	28.23'	57.96'
C7	156.25'	19°44'06"	53.82'	27.18'	53.55'
C8	150.00'	20°22'59"	53.40'	26.89'	53.12'
C9	85.00'	26°04'01"	38.67'	19.68'	38.34'
C10	50.00'	34°55'46"	30.48'	15.73'	30.01'
C11	76.18'	32°58'58"	44.33'	22.98'	44.00'
C12	75.00'	26°50'37"	35.14'	17.90'	34.82'
C13	57.58'	35°15'08"	36.43'	18.85'	35.83'
C14	75.00'	26°47'47"	36.40'	17.87'	34.76'
C15	60.66'	35°21'04"	37.43'	19.33'	36.84'
C16	75.00'	32°51'06"	44.31'	22.82'	42.67'
C17	57.58'	36°13'10"	36.40'	18.83'	35.80'
C18	75.00'	26°49'55"	35.12'	17.89'	34.80'
C19	75.00'	32°51'06"	44.31'	22.82'	42.67'
C20	60.00'	34°59'14"	36.64'	18.91'	36.07'
C21	84.42'	23°42'39"	34.94'	17.72'	34.69'
C22	65.00'	32°05'59"	32.03'	16.38'	31.80'
C23	80.11'	38°05'49"	40.58'	20.75'	40.29'
C24	50.00'	34°49'59"	30.40'	15.68'	29.93'
C25	50.00'	34°49'59"	30.40'	15.68'	29.93'

